

Snow and tell

young times

PUZZLES

Everyone's complaining about the cold weather. But as these amazing new close-up photos of snowflakes reveal, winter is also a beautiful time, says **Chloe Lambert**

Have you ever caught a snowflake in your hand? They are only a few millimetres in size, but a snow crystal scientist, Kenneth Libbrecht, has designed a special microscope and camera to get close-up images. He photographed the snowflakes in the seconds just after they fell to earth, and used coloured lights to illuminate their different formations in these pictures. Snowflakes form in clouds when the temperature is below freezing. A droplet of water freezes into ice particles, making a snow crystal. As it falls through the cloud, it bumps into other crystals and develops facets. As it grows, it becomes heavier and falls through the sky. It can take several hours before a snowflake reaches the ground. The air that the snowflake falls through has to be below freezing, or it will melt and turn to rain.

Did you know that every snowflake is unique? A snowflake's pattern depends on the temperature and pressure conditions in the cloud where it was made, so no two are alike. There are many different types, including flat plate snowflakes (top) and star shaped, or stellar snowflakes (top left). Most have six-sided symmetry, but some have as many as 12 sides (bottom right).

According to *Guinness World Records*, the world's largest snowflake was 38cm and 20cm thick. It fell in Montana, in the United States, on January 28, 1887.



These photographs are from *Snowflakes* by Kenneth Libbrecht, published by Voyageur Press at £9.99

Dingbat

Which word or phrase is this? Say what you see

momanon

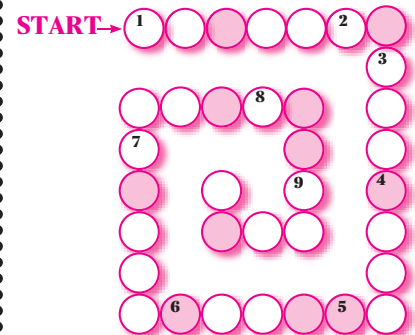
Yesterday's answer Seesaw

Yesterday's riddle A coffin

Puzzle of the day: spiral

Write the answer to each clue in the spiral, but be careful: the **last** letter of one answer is the **first** letter of the next! Then write out the letters in the pink circles in order to find a city where snakes might live.

- 1 Eyelid hairs (6)
- 2 Cunning, sneaky (3)
- 3 Jellystone Park bear (4)
- 4 Stupid person (5)
- 5 Number of sides on a triangle (5)
- 6 — State Building, New York skyscraper (6)
- 7 Explode, like a volcano (5)
- 8 Spanner or chisel, eg (4)
- 9 Soup server (5)



Yesterday's answers 1. Wellingtons 2. Flip flops 3. Trainers 4. Sandals 5. Slippers

WHO

DO YOU THINK YOU ARE?*

THE NATIONAL HISTORY SHOW

27 Feb - 1 Mar 2009 Olympia, London

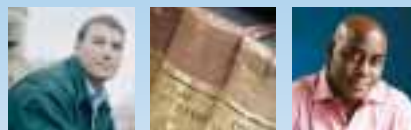
Live

powered by
TIMESARCHIVE

2 For 1
Ticket Offer
Buy Two Tickets
For £20!*
Quote TIMES241

WHAT'S YOUR STORY?

Go beyond the books and unearth your family history at this live event



REVEAL the fascinating secrets of your ancestors' colourful lives

UNEARTH your military ancestors and have heirlooms examined by experts



HEAR the stories of celebrities Harriett Pinnett, Matthew Pinsent & Lesley Garrett

DISCOVER how to start your research with one-to-one expert guidance

To book tickets call 0844 412 4629 or visit www.whodoyouthinkyouarelive.co.uk

Special Q Jump tickets also available for £22* each, includes 3 workshops and fast track entry to Ask the Experts!